



ST. PETER'S CHURCH BROADSHEET

APRIL 2010

A MONTHLY NEWS ROUND-UP FOR THE PARISH OF ALDBOROUGH HATCH

Services

Holy Week

Maundy Thursday 1st April

8pm Holy Communion
and
Stripping of the Altar

Good Friday 2nd April

10.30am Family Service
2pm Devotional Hour

Holy Saturday 3rd April

8pm Easter Vigil

Sunday 4th April

Easter Day

8am Holy Communion
10.30am Holy Communion
6.30pm Evensong

Sunday 11th April

Second Sunday of Easter

8am Holy Communion
10.30am Holy Communion
6.30pm Evensong

Sunday 18th April

Third Sunday of Easter

8am Holy Communion
10.30am Family Service
6.30pm Holy Communion

Sunday 25th April

Fourth Sunday of Easter

8am Holy Communion
10.30am Holy Communion
6.30pm Evensong

Sunday 2nd May

Fifth Sunday of Easter

8am Holy Communion
10.30am Morning Prayer
6.30pm Holy Communion

Weekdays

The church is open for private prayer on
Monday (10am to 12noon) and
Wednesday (10.30am to 12noon) except
Bank Holidays.
Wednesday 10am: Holy Communion

Flower Festival Fund Raising

*Events to raise money to pay for the
flowers*

Gravel Sands Goes West - 10th April
Just Desserts - 14th May
Plate Raffle - 4th June

Let's take the risk

Everyone needs some friends they can talk with and share with. And when we experience difficult times, friends are even more important. However capable, however intelligent, independent or even powerful we may be – we still need at least one friend or companion with whom we can share. Even Jesus needed friends. Most of us, of course, don't think of ourselves as powerful or important! There were times when even He felt lonely and times when He felt apprehensive – and it was the simple act from a woman friend that helped Him. Let me remind of you of this story which took place shortly before what we now call Holy Week.

Jesus visited his friends, Mary, Martha and Lazarus. Janet Morely wrote a poem based on this story. Here is part of it:

*'In the midst of the company I sat alone, and the hand of death took hold of me;
I was cold with secrecy, And my God was far away.*

*For this fear did my Mother conceive me, and to seek this pain did I come forth?
Did her womb nourish me for the dust, or her breasts, for me to drink bitterness?'*

Then Mary anoints Jesus with expensive perfume, lavishing it on Him so that the whole house was filled with its scent. And the disciples, especially Judas, criticise her for the waste of money. The poem continues:

*'I was desolate, and she came to me; when there was neither hope nor help for the pain
she was at my side; in the shadow of the grave she has restored me...*

She has touched me with authority; in her hands I find strength.

For she acts on behalf of the broken, and her silence is the voice of the unheard.

Though many murmur against her, I will praise her;

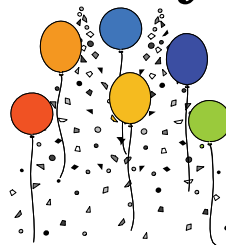
And in the name of the unremembered, I will remember her'

That simple, silent act gave strength and solace to Jesus. When He was preparing Himself to face the Cross, she helped Him. It was the act of a friend who sensed His distress and did what she could to comfort Him.

Those simple acts means so much to us, don't they - though I dare say most of us don't pour perfume over the heads of our friends. Perhaps we give a bunch of flowers, though, or sit by a hospital bed, or pop in to ask how someone is. Mary offered her friendship to Jesus, even though her action could have been misunderstood, even though it aroused criticism for the other friends of Jesus. I dare say Mary was afraid of being rebuffed – but she still acted. Let's not be put off by our fears - of being misunderstood, or rebuffed. Let's take the risk and offer an act of friendship to those we know who need it – especially those who seem lonely.

Revd Clare Nicholson, Vicar

St. Peter's May Day Fete



Bank Holiday Monday 3rd May - 2pm to 5pm

All the fun of the fair!

Coconut Shy - Bat-the-Rat - Bottle Tombola - Raffle - Books - Preserves
Bedding plants - Home-made Cakes - Tin Tombola - Toy Tombola - Jigsaws
Bowling for a Pig - New Gifts (unwanted presents - *no jumble please*)
Face Painting - Refreshments: Tea, Coffee, Cakes, Soft Drinks

The Sunday Club for children aged three and over meets in the church halls at
10.30am on Sundays 11th and 25th April All children are very welcome.
On April 4th and 18th we will be in church for Easter Sunday and Family Service.

Annual Parochial Church Meeting

Sunday 25th April following Evening Service (7.15pm approx)

Gravel Sands Goes West



St. Peter's Church Halls

Saturday 10th April – 7pm for 7.30pm

Bring your own drinks

Tickets – Adults £7, Children £3

Details and booking to

Linda Bowley

(TEL: 020 8551 3357)

Enjoy an evening at a 1950s Holiday

Camp with a Cowboy theme.

Entertainment, games, dancing and good food. There will be a Talent Competition

for the youngsters and a Fancy Hat

Competition with the theme of Westerns for the adults.

Historic Aldborough Hatch, Essex

Set of ten postcards – 6” x 4”

Printed on glossy photo-paper

Aldborough House and Chapel - around 1800; The Chapel -1905; The Chapel - 1988 and 2010; The Dick Turpin - pre-1912 and pre-1944; Cuckoo Hall – early 20th Century and 2010; The smithy opposite Aldborough Hall; Aldborough Grange; St. Peter's Church and Halls - 1930s or earlier and 2010; Sketch of St. Peter's on the appeal leaflet – 1860s and the church today; The Church of St. James, Little Heath

£3 per pack of ten

(Please add £1 postage and packing)

Available from Ron Jeffries, 37 Spearpoint Gardens, Aldborough Road North, IG2 7SX

All profits to St. Peter's Church

Monday Club

5 th April	Bank Holiday – no meeting
12 th April	Cards
19 th April	Moneyspinners Shop
26 th April	Bingo

St. Peter's Organisations

Monday Club - Monday 2pm

Beaver Scouts - Monday 5.15pm

Cub Scouts - Monday 6.30pm

Scouts – Monday 7.45pm

Brownie Guides - Tuesday 7pm

Guides - Wednesday 7pm

Following publication of 'The Sea Scouts of Aldborough Hatch' in the January BROADSHEET, we received an email from Alan and Christine Belcher, both of whom were mentioned in the article which told the story of the building of the 'Eagle', the 16 foot National Dinghy in the churchyard at St. Peter's in the mid-1950s. Married for 49 years, both Alan and Christine have been leaders in Scout Groups after moving from Aldborough Hatch following their marriage. They told us that the article "evoked such wonderful memories of that period in our lives" and Alan wrote of his recollections of the boat building. Tragically, Alan died in early February this year shortly after writing, having been bedridden since October with Myloid Leukaemia. Our sympathies and prayers are with Christine, brother David and their families as we publish Alan's recollections in his memory.

Plank-steaming in the churchyard

My experience in the Scouts and the Sea Scouts had a profound effect on my life and I have always been very grateful for the wood working skills and the experience I gained during the building of the *Eagle*.

I remember the plank steaming weekends when we had to saw the 20 foot left and right hand planks, shaping each one individually and spending hours planing and sanding them in order to achieve Scout Leader Derek William's exacting standards. These then required steaming in order that they could be bent to shape and fixed to the oak frame.

We never seemed to have enough coal for heating the large water drum required for the steaming process, so in the build-up to the steam weekends we had the task of convincing parents and neighbours that they needed bundles of our scrap wood, which we had gathered together, for their fires. In exchange for this they would give us the necessary coal. In this way we always managed a good roaring fire, as all good Scouts would.

I can remember the acrid smell of the smoke drifting across the adjoining graveyard as we stoked the fire in our efforts to keep up the head of steam required to complete the work. Our actions caused many complaints from people tending graves!

The next stage was for Derek to give the OK for the scalding hot planks to be removed and for us young Scouts to run around trying to clamp the planks into position before they lost their elasticity - something, I'm sure, that would never be allowed today for health and safety reasons. All this was completed, of course, under the watchful eye of Derek Williams.

Alan Belcher

Did you know?

The Matchstick Church: Over many years St. Peter's has had a church within a church – a model made from hundreds of matchsticks. It stands today on the altar frontals box at the back of the church, but have you ever wondered where it came from? The model of St. Peter's was made in the early 1950s by George Ingram, who lived with his wife, Win, in Oaks Lane, opposite

Aldborough Hatch Farm. George and Win had two daughters, Joyce and Margaret, who were in the Guide Company at St. Peter's.

The Revd. Lawrence Pickles, Vicar at the time, led one of the first Stewardship Campaigns at St. Peter's and George Ingram made the matchstick model as a visual aid to support the campaign. The model was used as a centrepiece for a number of fund raising activities and events.

George Ingram had served abroad in the armed forces during the Second World War, whilst Win and her two daughters were evacuated to Wales. The family lived in Oaks Lane after the War when the Oaks Lane Estate was first built. When George Ingram retired, he and Win moved to the Gower Peninsula in Wales.

When the window arches were painted red, blue and gold? Have you ever wondered when the window arches in St. Peter's were first painted red, blue and gold? They match the hanging cross – which was installed in the 1940s when the Revd Joseph Palanque Byng was Vicar - but it was not until 1983 that the arches were painted.

In that year the Community Service Unit worked over some six months on Sundays re-plastering and painting the inside of the church. A number of the offenders took great pride in their work. At the start of the project the hanging cross was taken to Aldborough Hall Farm, where Doreen Mugford and Lucy Allison undertook the task of repainting. When the cross was re-hung, one of the offenders suggested that the arches over the windows should be painted in the same red, blue and gold as the cross. They experimented with one window and members of St. Peter's were invited to come into the church to meet the offenders and to make the decision as to whether or not all the window arches should receive similar treatment. They decided that the colours enhanced the church – and the arches were painted.

Who painted the rear light fittings in black and gold? The oldest offender to work with the Community Service Unit at St. Peter's was a sad man in his late fifties who had been employed all his life by London Underground and had been ticket collector at a local station. He pleaded guilty to theft – pocketing excess fares – as the result of which he had lost his job and his pension. He was often tearful when he came to St. Peter's for the shame hurt him deeply.

I often think of the tragedy that the man had brought upon himself when I look at the two light fittings on the West Wall at St. Peter's – for he had spent his time at St. Peter's rubbing down the metal work and painting it in black and gold.

He found great satisfaction in what he was doing and was helped to face the future through the comradeship he found in our church.

Who linked the church halls? Some months later the Community Service Unit returned for a further three months or so. This time they worked in the church halls where, in addition to completely redecorating, they cut through from the Vestry into the Back Hall to make a doorway and broke through from the Large Hall to the Back Hall, fitting sliding doors in place. **RJ**

Vicar: Revd. Clare Nicholson – 020 8599 0524 **Churchwardens:** Roger Goffee – 020 8590 1610, Martyn Stewart – 01277 821790

Reader: Brian Kerrison – 020 8599 4368 **Hall Bookings' Secretary:** Stella Fletcher – 020 8599 3115

BROADSHEET Editor: Ron Jeffries – 020 8599 7250 **Distribution:** Yvonne Jeffries – 020 8599 7250

Published by: St. Peter's Aldborough Hatch Parochial Church Council

Printed by: SPS Communications, 499 Aldborough Road North, Ilford, Essex IG2 7SY – 020 8599 6452

Copy deadline for Next Issue:
Wednesday 7th April